

UNITED STATES PUBLIC LAND SURVEY CORNER CERTIFICATE FOR

Land survey monuments situated in Section 14, Township 106 North, Range 40 West, of the Fifth Principal Meridian, Murray County, Minnesota..

Previously recorded in N/A in County Recorder's Office.

(Show reason for preparing this certificate, the evidence and detailed procedure used in establishing the corner position & monumentation found or placed.)

MONUMENT DESCRIPTION AND REMARKS: On November 12, 2010 we dug with backhoe for West 1/4 Corner

& found a 10" X 9" stone 3.4' below surface Centerline Township Road in line with fence west & accepted

as corner. Set 5/8" Iron stake with survey cap 23008 over top center of stone. We dug for North 1/4

Corner & found a 12" X 12" stone 2.5' below surface 5' South of Township Road Centerline in line with

fence South & occupation line North. Set 5/8" Iron Stake with survey cap 23008 over top center of stone.

We dug with backhoe for East 1/4 Corner and found no evidence of corner. We then set 5/8" Iron Stake

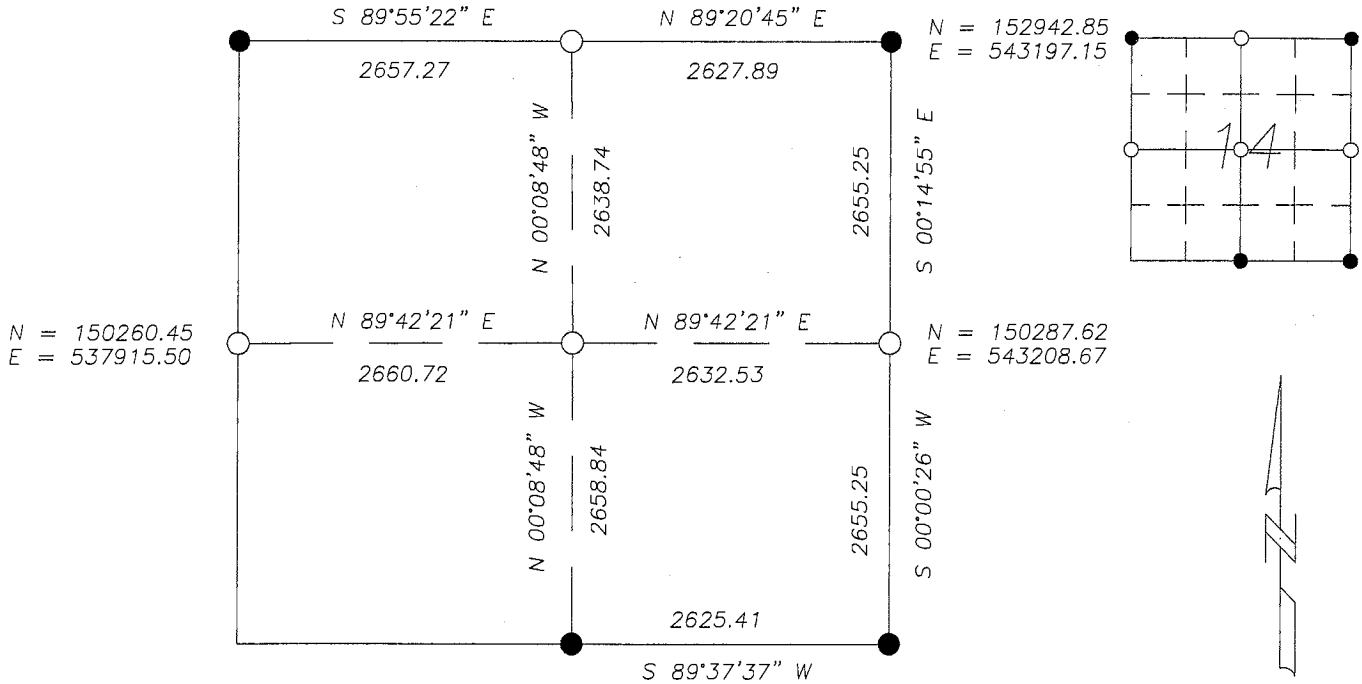
with survey cap 23008 at Center Line Township Road & midway between NE & SE Corner. Corner is in line

with fence West & occupation line East. Also set 5/8" Iron stake with survey cap 23008 at center of

section by intersection of opposing quarter corners as per PLS Instructions.

MURRAY COUNTY COORDINATES NAD 83 (2007) **PLAN-VIEW**

N = 152912.84
E = 540569.43



I hereby certify that this land surveying document was prepared and related survey work was performed by me or under my direct supervision and that I am a duly licensed Land Surveyor under the laws of the State of Minnesota.

Perry L. Zieske 11-23-10
Signature Date
Perry Zieske
License number 23008

Corners to be Indexed

Corners	Section	Township	Range
E 1/4	14	106	40
W 1/4	14	106	40
CTR.	14	106	40
N 1/4	14	106	40